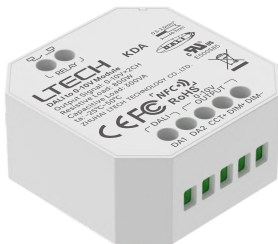


LTECH

DALI to 0-10V Module

Model: KDA



Manual

www.ltech-led.com

Product Introduction

- **Signal Conversion:** DALI to 0-10V signal conversion, enabling dimming and color temperature adjustment.
- **Flexible NFC Configuration:** 0-10V can be easily configured into multiple output modes via NFC, meeting single-channel dimming, dual-channel independent dimming, and dual-channel dual-color temperature combination requirements.
- **Built-in Relay:** Allows quick on/off switching of the backend LED power supply, ensuring more precise control and safer operation.
- **NFC Programming:** Easily set DALI dimming interface, DALI address, dimming fade time, and other parameters with simple operation.
- **Integrated Design:** Power supply and communication are integrated, making installation more convenient.
- **Compact Size:** Compatible with European, American, and national standard junction boxes, offering flexible installation and adaptation to various scenarios.

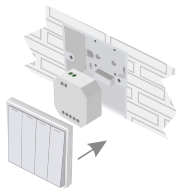
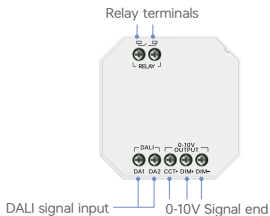
Technical Specs

Model	KDA
Current consumption	≤8mA@16V
Power supply mode	DALI Bus power supply
Input signal	DALI
Output signal	0-10V
Relay switch parameters	Resistive load 800W, capacitive load 300W, maximum load 1600W
Working environment	-25°C~50°C
Product size	L45×W45.5×H20.5(mm)
Product weight	30g

CE RoHS



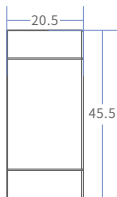
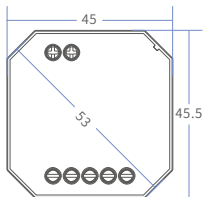
Product icon



Hide the product in the switch bottom box

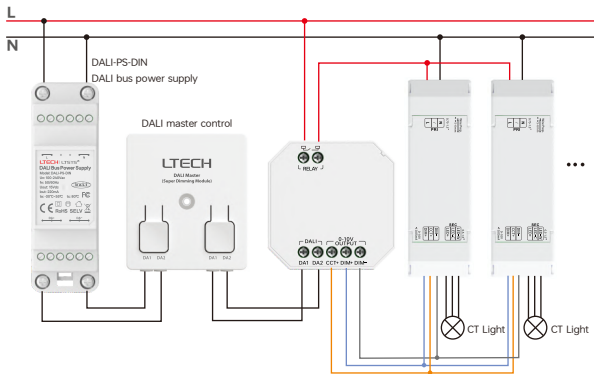
Product size

Unit: mm

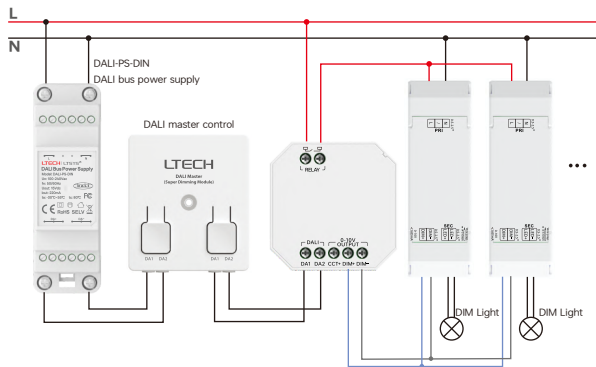


Wiring application

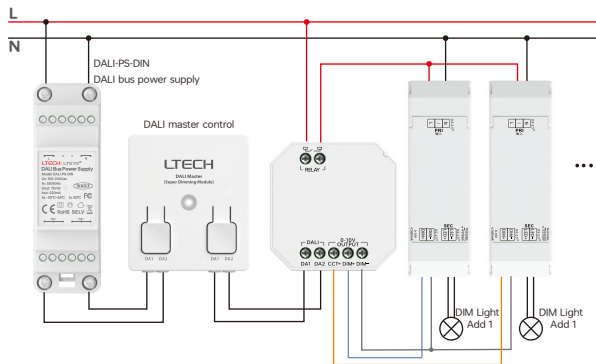
1.Application diagram of color mixing temperature lamp wiring



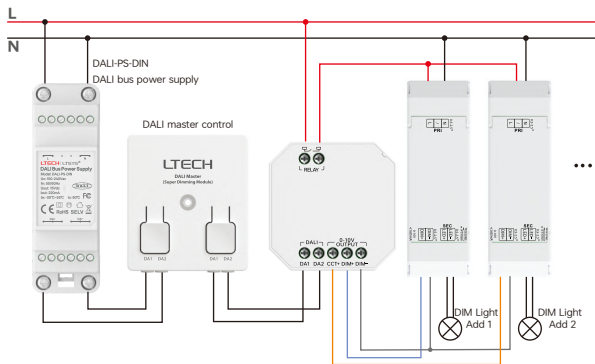
2.single-address single-channel dimming



3.single-address dual-channel dimming



4.dual-address dual-channel dimming



Use the NFC Lighting APP

Scan the QR code below with your mobile phone and install the APP as prompted.

(Due to performance requirements, the required phone model is Apple: iPhone8 or above, and the operating system iOS13 or above; Android: NFC enabled models)



Scan code download APP
ios/apk

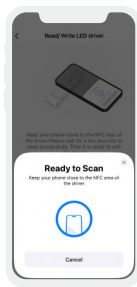


NFC identifier of the device

***When setting device parameters,
Perform this operation only when
the device is powered off.**

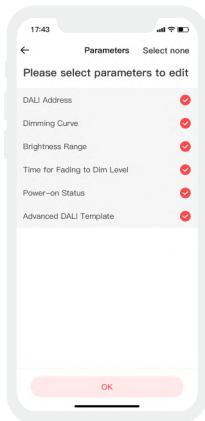
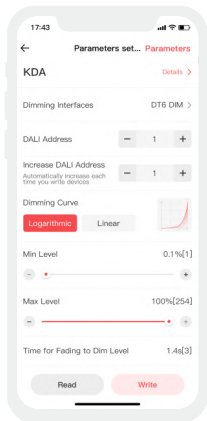
1. Read the device

Click "Read/Write smart Power Supply" in the APP [home page], place the sensing area of the phone near the NFC identification point of the driver, and read the device parameters.



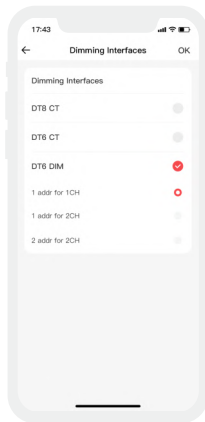
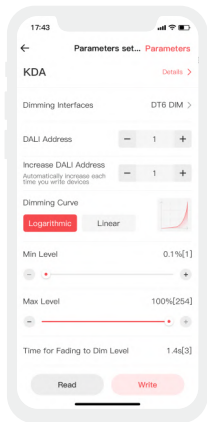
2. Edit parameters

Click "Parameter Management" to edit parameters such as DALI address, dimming type, and DALI advanced template settings.



3. key control target selection

Click the "Dimming Interface" button to set the corresponding DALI address information output for each dimming interface, including single address and group address channel output.



Attention

- Product installation and commissioning should be done by a qualified professional;
- LTECH products are and not lightningproof non-waterproof (special models excepted). Please avoid the sun and rain. When installed outdoors, please ensure they are mounted in a water proof enclosure or in an area equipped with lightning protection devices;
- Good heat dissipation will prolong the working life of products. Please ensure good ventilation.
- Please check if the working voltage used complies with the parameter requirements of products;
- Before you power on products, please make sure all the wiring is correct in case of incorrect connection that causes damage to light fixtures.;
- If a fault occurs, please do not attempt to fix products by yourself. If you have any question, please contact your suppliers.

* This manual is subject to changes without further notice. Product functions depend on the goods.
Please feel free to contact our official distributors if you have any question.

Warranty Agreement

- Warranty periods from the date of delivery : 2 years.
- Free repair or replacement services for quality problems are provided within warranty periods.

Warranty exclusions below:

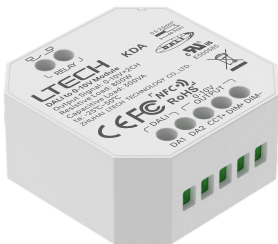
Following conditions are not within the guarantee range of free repairing or replacement services:

- Beyond warranty periods;
 - Any artificial damage caused by high voltage, overload, or improper operations;
 - Products with severe physical damage;
 - Damage caused by natural disasters and force majeure;
 - Warranty labels and barcodes have been damaged;
 - No any contract signed by LTECH.
1. Repair or replacement provided is the only remedy for customers. LTECH is not liable for any incidental or consequential damage unless it is within the law.
 2. LTECH has the right to amend or adjust the terms of this warranty. The warranty that issues in writing shall prevail.

LTECH

DAI-0-10V模块

型号: KDA



使用说明书

www.ltech.cn

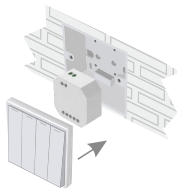
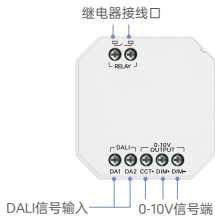
产品介绍

- 信号转换：DALI转0-10V信号，可调光和色温；
- NFC配置灵活：0 - 10V可通过NFC轻松配置成多种输出模式，满足单通道调光、双通道独立调光及双通道双色温组合需求；
- 内置继电器：能快速开/关后端LED电源，控制更精准，使用更安全；
- NFC编程：可轻松设置DALI调光接口，DALI地址和调光渐变时间等参数，操作简单；
- 一体化设计：供电与通信集成，施工更方便；
- 体积小巧：适配欧规、美规和国标底盒，安装灵活，适配多种场景。

技术参数

产品型号	KDA
电流消耗	≤8mA@16V
供电方式	DALI总线供电
输入信号	DALI
输出信号	0-10V
继电器开关参数	阻性负载800W，容性负载300W，最大负载1600W
工作温度	-25°C~50°C
产品尺寸	L45×W45.5×H20.5(mm)
产品重量	30g

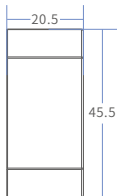
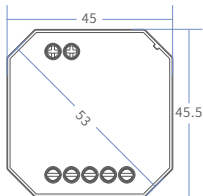
产品图示



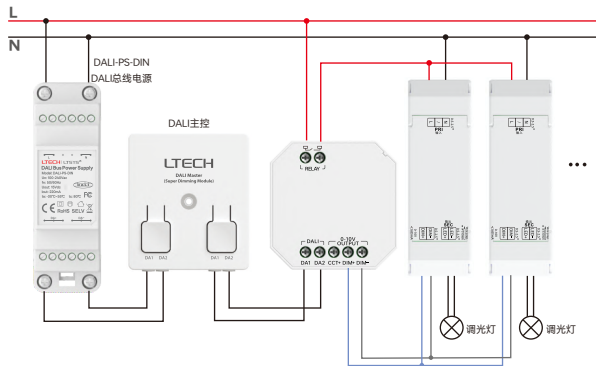
将本产品隐藏于开关底盒内

产品尺寸

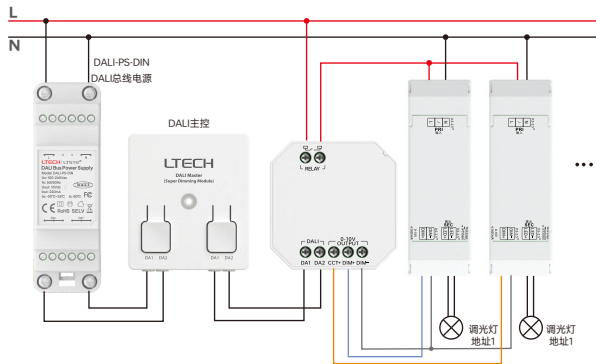
单位: mm



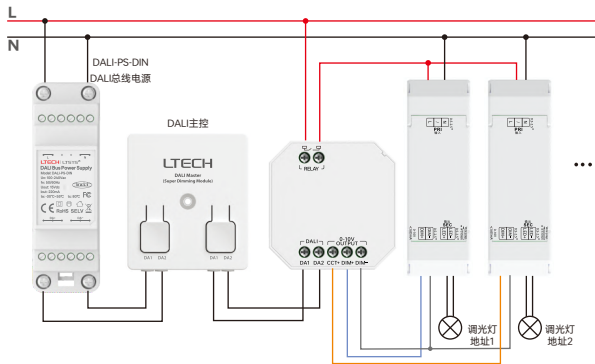
2.调光单地址单通道



3.调光单地址双通道



4.调光两地址双通道



搭配NFC Lighting APP使用

通过手机扫描下方二维码，按提示完成APP安装。(因性能需求，要求手机型号苹果：iPhone8及以上、且操作系统iOS13 及以上；安卓：具备NFC功能机型)



扫码下载APP
ios/apk



设备NFC标识点

*设置设备参数时，
必须在设备断电情况下进行操作。

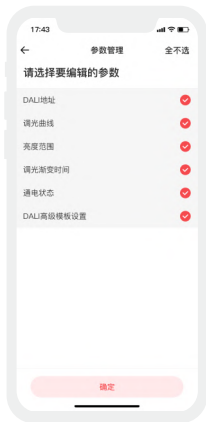
1.读取设备

在APP【首页】点击“读/写智能电源”将手机感应区域靠近驱动器NFC标识点，读取设备参数。



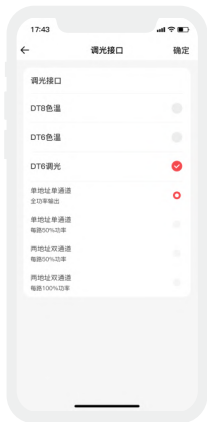
2. 编辑参数

点击“参数管理”可选择编辑DALI地址、调光类型及DALI高级模板设置等参数。



3. 按键的控制对象选择

点击按键的“调光接口”，设置每个调光接口对应的DALI地址信息输出，包括单地址、组地址通道输出。



注意事项

- 本产品请由具有专业资格的人员进行调试安装；
- 本产品(专有型号除外)不能防水防雷，需避免日晒雨淋。如安装在户外，请使用防水箱和防雷装置；
- 良好的散热条件会延长产品的使用寿命，请把产品安装在通风良好的环境；
- 安装时，避免靠近大面积金属物体，或堆叠摆放，以免信号干扰影响使用；
- 避免安装在雷区、强磁场和高压区域；
- 请检查使用的工作电压是否符合产品的参数要求；
- 通电调试前，确保所有接线正确且牢固，以免短路损坏部件，触发事故；
- 如果发生故障，请勿私自维修；如有疑问，请联系供应商。

* 本说明书的内容如有变更，恕不另行通知。若内容与您使用的功能有所不同，则以实物为准。
如有疑问，欢迎向我司授权的经销商咨询。

保修条例

- 自出厂之日起保修服务期为2年。
- 在保修服务期内出现产品质量问题雷特将给予免费修理或更换服务。

非保修条例:

属下列情况不在免费保修或更换服务范围之内:

- 已经超出保修期限的;
 - 过高电压、超负载、操作不当等人为造成的损坏;
 - 产品外形严重损坏或变形;
 - 自然灾害以及人力不可抗拒原因造成的损坏;
 - 产品保修标签和产品唯一条形码损坏;
 - 无雷特签订的合同或发票凭证。
1. 修理或更换是雷特对客户的最唯一补救措施。雷特不承担任何附带引起的损害赔偿贵任, 除非在适用法律范围之内。
 2. 雷特享有修正或调整本保修条款的权利, 并以书面形式发布为准。



www.ltech.cn