

ARTNET-DMX-2 ARTNET-DMX Converter



FC CE RoHS

(5-Year
warranty)

ARTNET-DMX converter is the Ethernet Control System based on the Artnet protocol, used to convert Artnet data package into DMX512 data over Ethernet. It adopts the high-speed ARM processor with stable and reliable working performance. Following the standard Artnet protocol, it provides RJ45 interface and standard DMX512 output interface.

ARTNET-DMX-2 has two standard DMX512 data output ports, output 1024 data in total.

It is compatible with lighting control software which supports Artnet protocol, widely used in the LED dot matrix displays and stage lighting with control network needing lots of DMX512 data, especially for recording scenes at TV stations, stage shows, entertainment venues and so on.

1. Technical specs

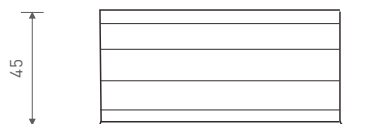
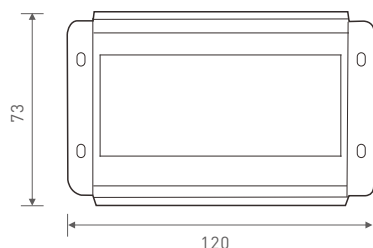
ARTNET-DMX-2

Power Input:	12Vdc (with a power adaptor)	Network Connection:	RJ45
Input Signal:	Artnet	Isolation Ethernet Port:	Transformer isolation
Output Signal:	DMX512	Working Temp:	-30°C~65°C
DMX Channels:	512 × 2CH	Dimensions (L×W×H):	120×73×45mm
Current:	30mA@12Vdc	Package Size (L×W×H):	198×78×50mm
IP:	Indoor use only	Weight (G.W):	360g
DMX Output Connection: 3-pin XLR			

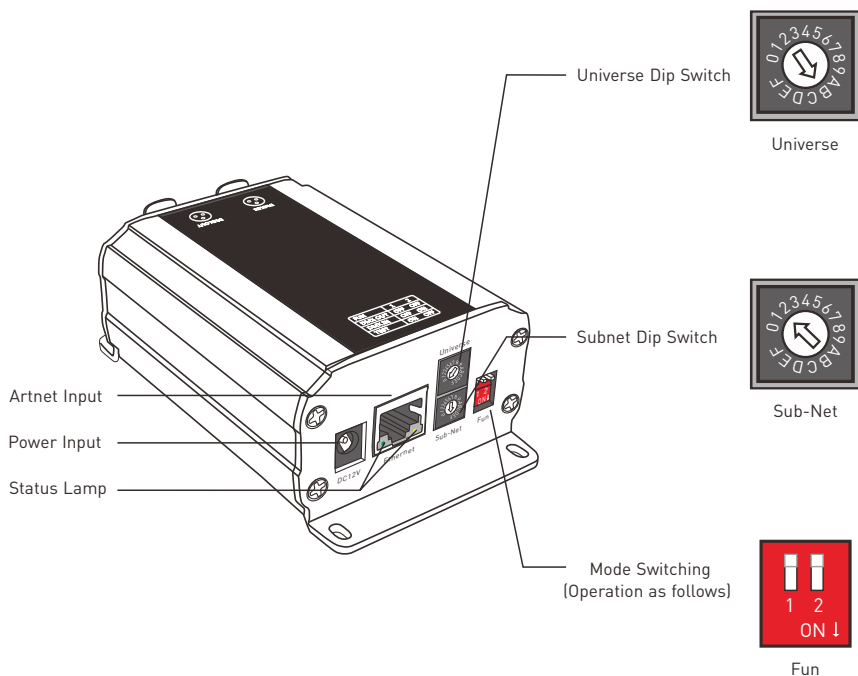
2. Performance features

- Based on Artnet protocol network data communication, accept network DMX data.
- IP address is bound to Subnet, no need to reset, plug and play.
- Manage Artnet on broadcast mode or unicast mode.
- Output 2 group DMX512 data.
- Firmware can be updated via the network.
- Compatible with the light software based on Artnet Protocol, control stage lighting and LED lighting simultaneously.
- Connect up to 256 DMX Universes to one network.
- 10/100 Mb Ethernet port.
- Data activity indicators.
- Configurable DMX output refresh rates.

3. Dimensions



4. Interface description



Mode switching instructions :

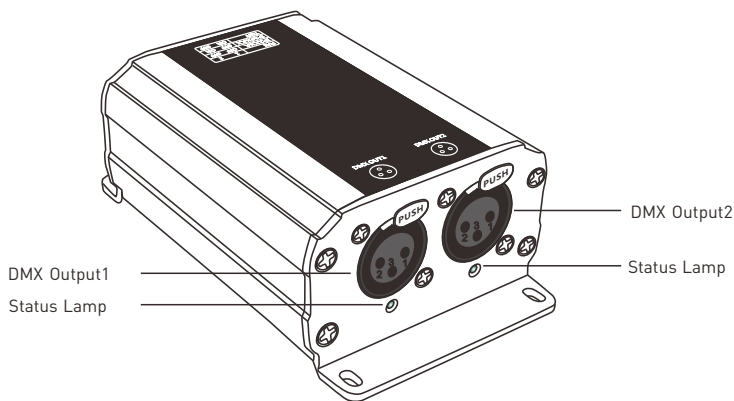
1	2	Diagrams	Functions
OFF	OFF		IP Address Setting: 2.XX.YY. Address.
OFF	ON		IP Address Setting: 10.XX.YY. Address.
ON	OFF		Testing function, OUT1 generates DMX data of 7 color jumping 170 pixels , OUT2 generates DMX data of 7 color gradient 170 pixels.

Address setting description:

Universe/Subnet Dip Switch	0	1	2	3	4	5	6	7	8	9	A	B	C	D	E	F
Value	0	1	2	3	4	5	6	7	8	9	10	11	12	13	14	15

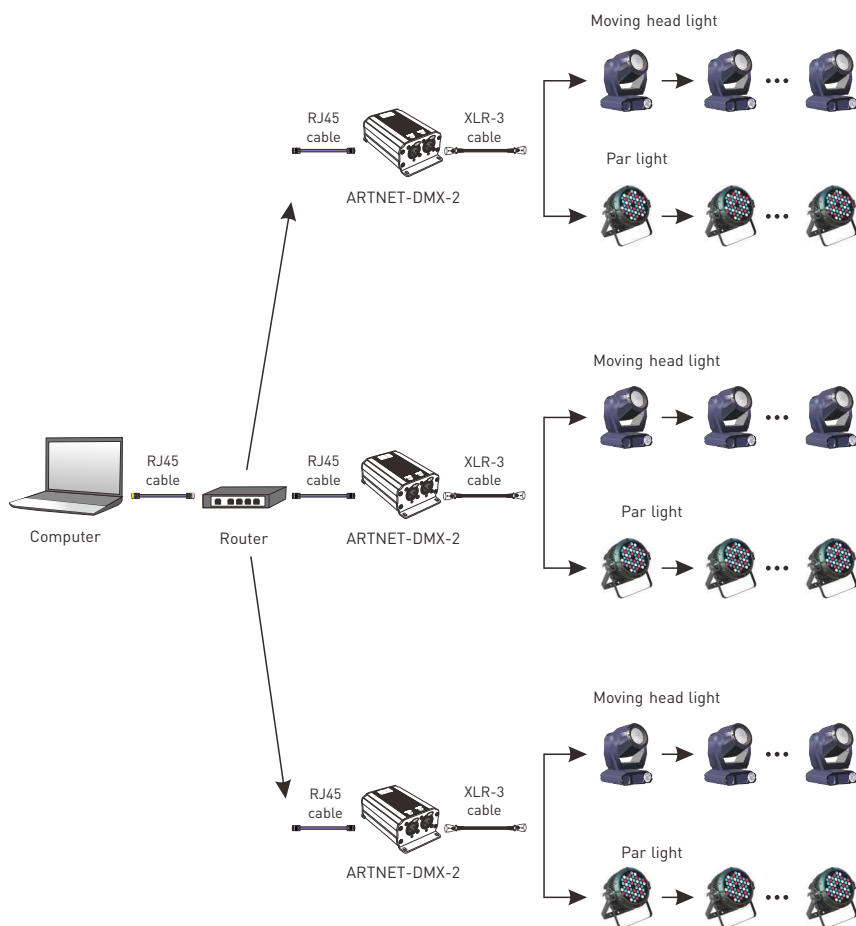
Calculating method: Group Address= Subnet×16 + Universe, IP Address=2.XX.YY.Group Address, MAC Address=44-4d-58-XX-YY-Group Address (XX.YY. is the random number generated by the factory).

For example: Subnet: 2, Universe: B, Group Address=2×16 + 11 = 43, so the DMX output group address is 43. Its corresponding IP address is 2.XX.YY.43, MAC address is 44-4d-58-XX-YY-43.



	1
	GND
	2
	DATA-
	3
	DATA+
DMX OUT1	DMX OUT2


5. Connection diagram

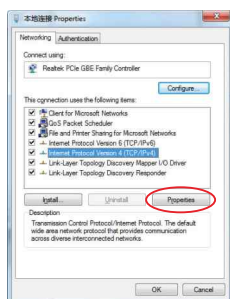


ARTNET-DMX-2 Lighting Control System Diagram

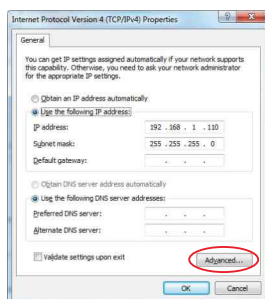
6. Connect ARTNET-DMX-2 to the computer

This product is compatible with all the ArtNet software in the market, here take MADRIX as an example:

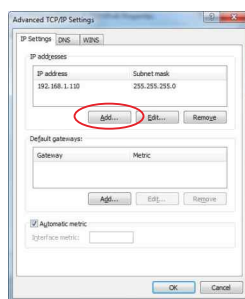
1. Install the Madrix 3 software in the computer, the icon on the desktop :  MADRIX 3
2. Use the equipped adapter to power ARTNET-DMX-2.
3. Connect ARTNET-DMX-2 and computer via the cable.
4. IP setting: this control system is compatible with random network segment. According to the ArtNet protocol, 2.X.X.X or 10.X.X.X can be added in the computer (X means arbitrary value), methods as below:



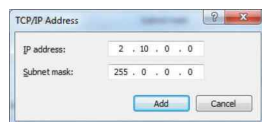
1. Open the Network, click "Properties" button of the TCP/IPV4 protocol.



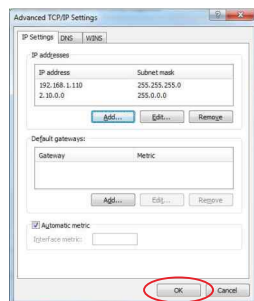
2. Click " Advanced".



3. Click " Add".




4. Add the IP address 2.X.X.X or 10.X.X.X (X could be arbitrary value).

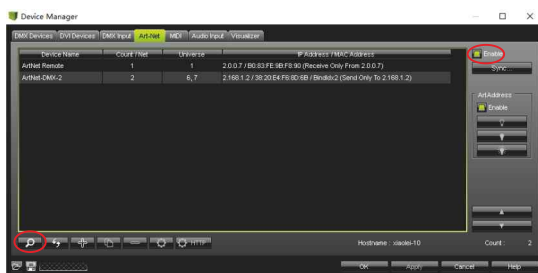


5. Interface of adding successfully, then click "OK" and exit.

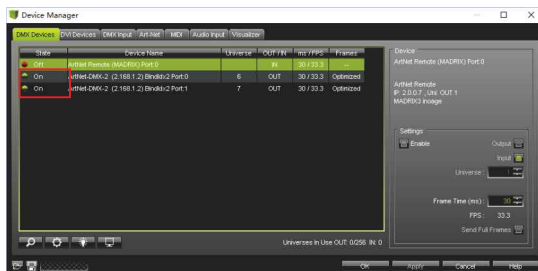
- Open Madrix 3 software, choose "preferences" > "device manager" from menu.



- In "device manager" dialog, choose "ArtNet" tab, tick "enable" and click search . ARTNET-DMX-2 will be searched.



- Click the tab of "DMX devices", set port status to "ON" if connected successfully. Now, you can use computer to control lamps via ARTNET-DMX-2.



7. Attention

- This product must be installed and adjusted by a qualified professional.
 - This product is non-waterproof (special models excepted). Please avoid the sun and rain. When installed outdoors, please ensure it is mounted in a water proof enclosure.
 - Good heat dissipation will extend the life the product. Please install the product in a environment with good ventilation.
 - Please keep the product away from a intense magnetic field, a high pressure area or a place where lightning is easy to occur.
 - Please check whether the working voltage used complies with the parameter requirements of the product.
 - Before you power on the product, please make sure all the wiring is correct in case of incorrect connection that may cause a short circuit and damage the components, or trigger a accident.
 - If a fault occurs, please do not attempt to fix the product by yourself. If you have any question, please contact the supplier.
- * This manual is subject to changes without further notice. Product functions depend on the goods. Please feel free to contact our official distributors if you have any question.

8. Warranty agreement

Warranty periods from the date of delivery : 5 years.

Free repair or replacement services for quality problems are provided within warranty periods.

Warranty exclusions below:

- Beyond warranty periods.
 - Any artificial damage caused by high voltage, overload, or improper operations.
 - Products with severe physical damage.
 - Damage caused by natural disasters and force majeure.
 - Warranty labels and barcodes have been damaged.
 - No any contract signed by LTECH.
1. Repair or replacement provided is the only remedy for customers. LTECH is not liable for any incidental or consequential damage unless it is within the law.
 2. LTECH has the right to amend or adjust the terms of this warranty, and release in written form shall prevail.

ARTNET-DMX-2 ARTNET-DMX 转换器



FC CE RoHS [质保5年]

ARTNET-DMX转换器是基于Artnet协议的以太网网络控制系统，它可将网络上Artnet协议中的网络数据包转换为标准的DMX512数据，采用高速处理器，工作稳定可靠，遵循标准的Artnet协议，提供RJ45网络接口以及标准的DMX512输出接口。

ARTNET-DMX-2共有2个标准的DMX512数据输出端口，总共可以输出1024个数据。

可以与兼容Artnet协议的灯光控制软件配合使用，广泛用于LED点阵以及需要大量DMX512数据的舞台灯光控制网络中，常用于电视台录播现场、舞台演出、娱乐场所等。

1、性能参数:

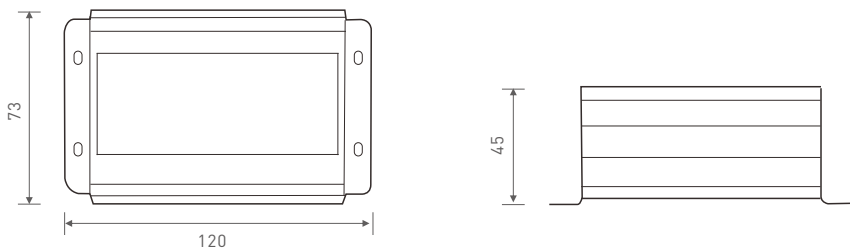
ARTNET-DMX-2

电源输入:	12Vdc (配套电源适配器)	网络连接:	RJ45
接收信号:	Artnet	网口隔离:	变压器隔离
输出信号:	DMX512	工作温度:	-30°C~65°C
DMX通道:	512×2通道	产品尺寸:	L120×W73×H45mm
电流进入:	30mA@12Vdc	包装尺寸:	L198×W78×H50mm
IP防护等级:	只能用于室内	重量 (毛重):	360克
DMX输出连接:	3针XLR		

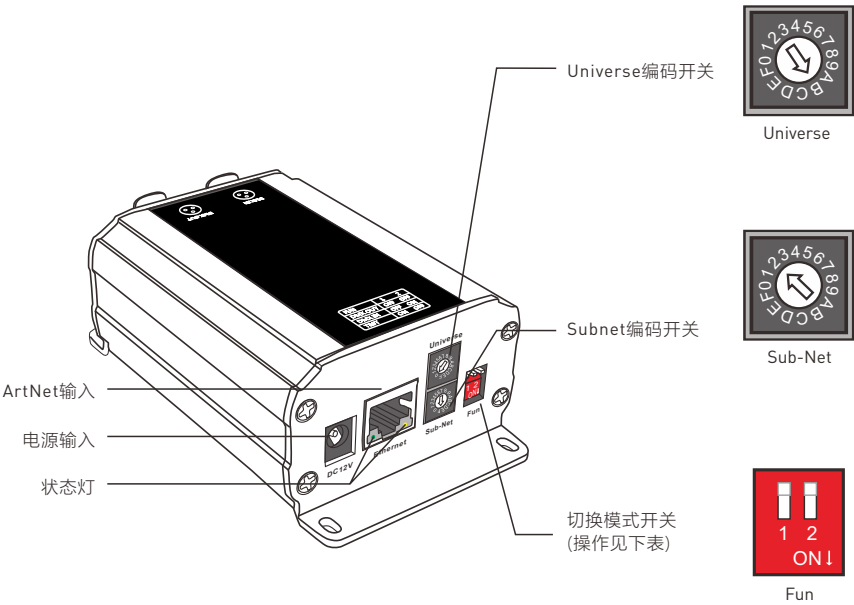
2、产品特点:

- 基于Artnet协议网络数据通信, 可接收网络DMX数据;
- IP地址与Subnet绑定, 不需要用户再另外设置, 可即插即用;
- 可以在广播或单播模式下管理Artnet;
- 输出两组DMX512数据;
- 可通过网络更新固件;
- 兼容Artnet协议的灯光软件, 输出可同时控制舞台灯光、LED灯光;
- 同一网络可连接256组DMX信号;
- 10/100 Mb自适应网络接口;
- 数据输出指示灯;
- 电脑可配置输出刷新频率。

3、尺寸图:



4、接口说明:

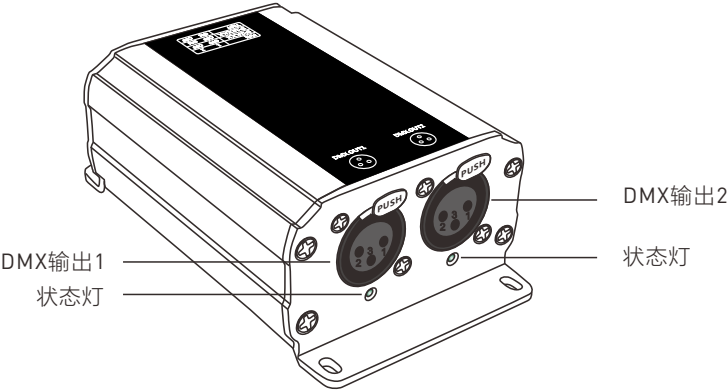


切换模式开关操作说明:

1	2	图示	功 能
OFF	OFF		设置IP为2.XX.YY.Address。
OFF	ON		设置IP为10.XX.YY.Address。
ON	OFF		自测功能，OUT1生成170个像素的七彩跳变DMX数据，OUT2生成170个像素的七彩渐变飘DMX数据。

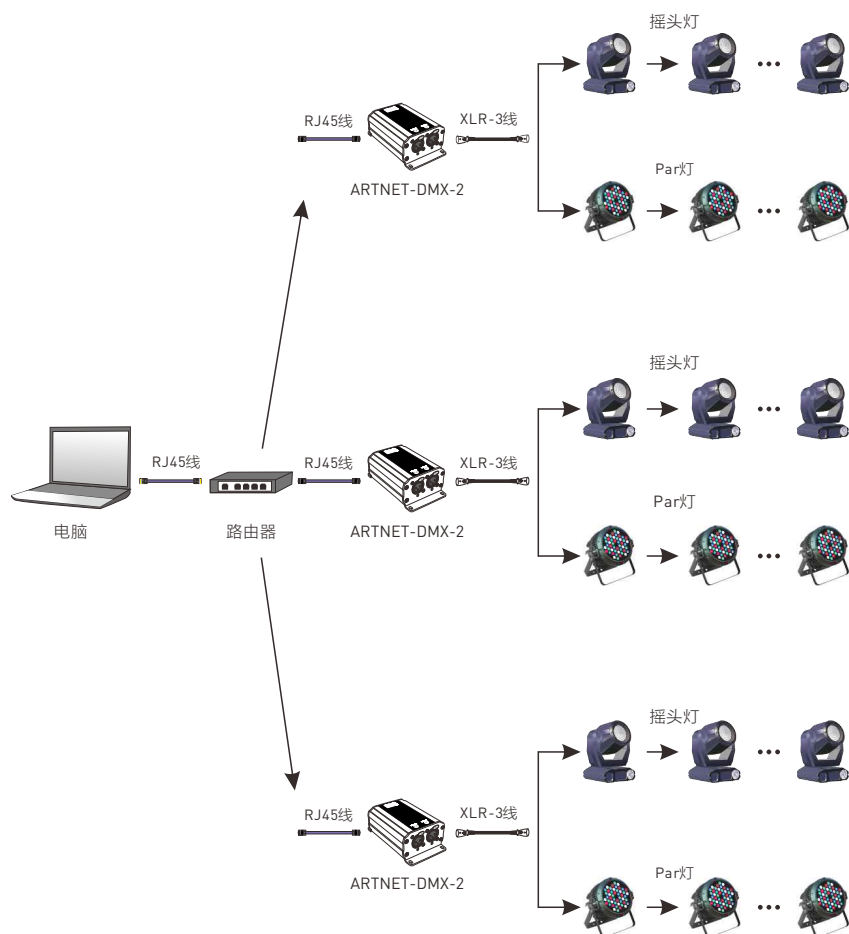
编码开关设置说明:

Universe/Subnet编码开关	0	1	2	3	4	5	6	7	8	9	A	B	C	D	E	F
值	0	1	2	3	4	5	6	7	8	9	10	11	12	13	14	15
说明：组地址Address = Subnet值×16 + Universe值，IP地址=2.XX.YY.组地址Address，MAC地址=44-4d-58-XX-YY-组地址Address。（XX.YY为产品出厂时生成的随机数）																
例如：Subnet编码为2，Universe编码为B，组地址Address = 2×16 + 11 = 43，所以DMX输出组地址Address为43，对应的IP地址为2.XX.YY.43，MAC地址为 44-4d-58-XX-YY-43。																



		1
		GND
		2
		DATA-
		3
DMX OUT1	DMX OUT2	DATA+


5、连接示意图:

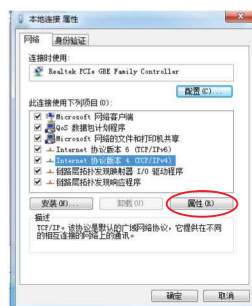


ARTNET-DMX-2舞台灯光控制系统示意图

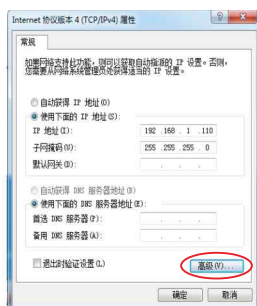
6、ARTNET-DMX-2连接电脑:

本产品支持市面上所有的ArtNet软件，下面以MADRIX为例进行说明:

1. 安装操作软件:电脑上安装MADRIX 3软件，装好后图标显示为:  MADRIX 3
2. 用配备的电源适配器连接ARTNET-DMX-2至电源;
3. 用网线将ARTNET-DMX-2和电脑连接好;
4. IP设置: 本转换器支持任意网段的设置。根据Artnet协议建议，请在电脑添加2.X.X.X或10.X.X.X网段（X表示任意数值），方法如下:



(1) 打开网络，点击TCP/IPv4协议的“属性”按钮。



(2) 点击“高级”按钮。



(3) 点击“添加”按钮。




(4) 添加2.X.X.X或10.X.X.X的IP地址（X为任意数值）。



(5) 添加成功后的界面，确定退出。

5. 打开MADRIX 3软件，在菜单上选择“首选项”/“设备管理器”；



6. 在“设备管理器”对话框中，选择“ArtNet”选项卡，勾选“启用”，并点击搜索 ；电脑将搜索到 ARTNET-DMX-2；



7. 切换至“DMX设备”选项卡，连接成功，将端口状态设置为“开”。现在可以实现电脑通过 ARTNET-DMX-2 控制灯具了；



* MADRIX®为德国 inoage GmbH公司的注册商标。

7、注意事项:

- 本产品请由具有专业资格的人员进行调试安装;
- 本产品(专有型号除外)不能防水, 需避免日晒雨淋。如安装在户外, 请使用防水箱;
- 良好的散热条件会延长产品的使用寿命, 请把产品安装在通风良好的环境;
- 避免安装在雷区、强磁场和高压区域;
- 请检查使用的工作电压是否符合产品的参数要求;
- 通电调试前, 确保所有接线正确且牢固, 以免短路损坏部件, 触发事故;
- 如果发生故障, 请勿私自维修; 如果有疑问, 请联系供应商。

* 本说明书的内容如有变更, 恕不另行通知。若内容与您使用的功能有所不同, 则以实物为准。如有疑问, 欢迎向我司授权的经销商咨询。

8、保修协议:

- 自出厂之日起保修服务期为5年。
- 在保修服务期内出现产品质量问题雷特将给予免费修理或更换服务。

非保修条例:

属下列情况不在免费保修或更换服务范围之内:

- 已经超出保修期限的;
- 过高电压、超负载、操作不当等人为造成的损坏;
- 产品外形严重损坏或变形;
- 自然灾害以及人力不可抗拒原因造成的损坏;
- 产品保修标签和产品唯一条形码损坏;
- 无雷特签订的合同或发票凭证。

1. 修理或更换是雷特对客户的最唯一补救措施。雷特不承担任何附带引起的损害赔偿, 除非在适用法律范围之内。
2. 雷特享有修正或调整本保修条款的权利, 并以书面形式发布为准。